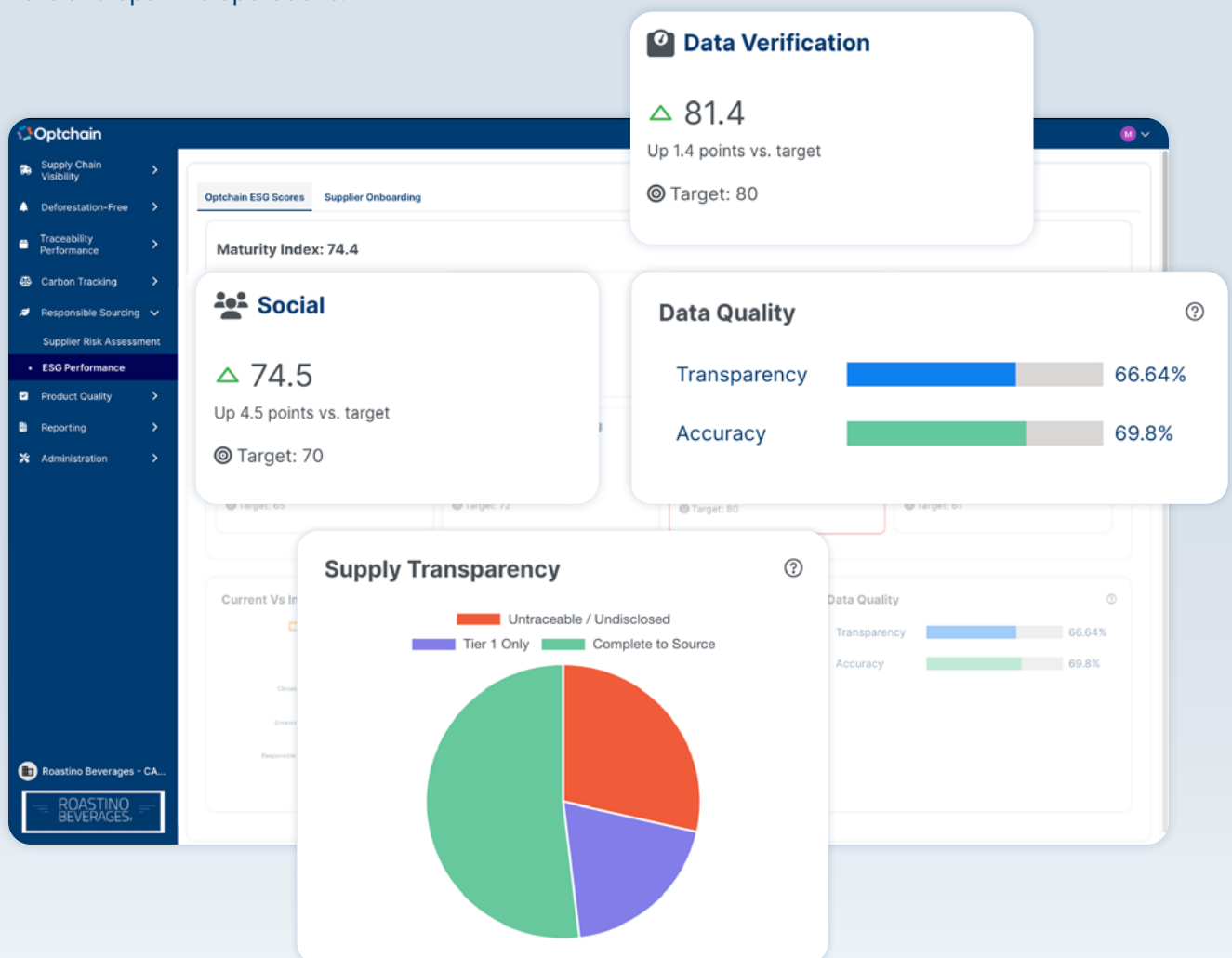


ESG TRACEABILITY

Optchain is a supply chain sustainability platform focused on ESG compliance, automating data collection, improving visibility, and delivering insights to manage risks and optimize operations.



**Reinventing
traceability**

WHY OPTCHAIN IS THE SOLUTION YOU NEED

Built with advanced traceability capabilities, Optchain ensures a transparent product lifecycle by capturing and integrating key data points across the supply chain. This enables full traceability and compliance with global regulations and sustainability standards.

Optchain facilitates supply chain mapping and helps onboard and engage suppliers at all levels. Its automated data capture integrates with your existing systems, reducing manual workload and saving time. In addition, its risk assessment tools provide actionable insights into supply chain performance.

Designed to facilitate supply chain sustainability, Optchain automates complex processes, enhances transparency with a holistic view of your operations, and delivers the insights needed to proactively manage risks and ensure regulatory compliance.



KEY FEATURES AND CAPABILITIES



ESG Compliance and Reporting

Our software optimizes ESG compliance by centralizing analytics and offering intuitive dashboards that present key ESG data for all stakeholders. With integrated reporting tools, it simplifies tracking, auditing, and compliance management, serving as your solution for meeting regulatory requirements.



Risk Assessment

Our multi-level risk assessment approach ensures ESG compliance: Level 1: Public data analysis provides an initial risk overview. Level 2: Self-assessment questionnaires allow suppliers to report their practices and potential risks. Level 3: On-field audits, directly integrated with auditors' platforms via Optchain, providing deep verification and ensuring full compliance.



Data Integration

Our platform captures and centralizes data across the supply chain through automated data capture applications and IT bridges. With integration into ERP, WMS, MES, and other enterprise systems, this feature eliminates the need for manual data entry, reducing errors, saving time, and increasing data accuracy.



Life Cycle Assessment (LCA)

Our LCA solution evaluates your supply chain's environmental impact, focusing on GHG emissions and identifying critical hotspots. We help you model scenarios and develop strategies to meet sustainability targets, reducing emissions and aligning with global standards.



Supply Chain Mapping and Supplier Onboarding

Map your multi-tier supply chain and easily onboard suppliers with Optchain. This feature enables organizations to engage partners, collect essential data, and manage various aspects such as documents, audits, assessments, campaigns, and alerts through a dedicated supplier portal.



Action Plan

Our Action Plan feature empowers you to track and follow up on corrective actions both internally and with external partners, ensuring accountability across the board. It proactively mitigates risks by identifying potential issues early and enabling targeted strategies for resolution.



Product Traceability

Gain full visibility across your supply chain by capturing and recording the "Who, What, When, and Where" of each critical tracking event. Our solution ensures that every movement, from origin to destination, is tracked in detail, providing accurate traceability in line with GS1 standards.

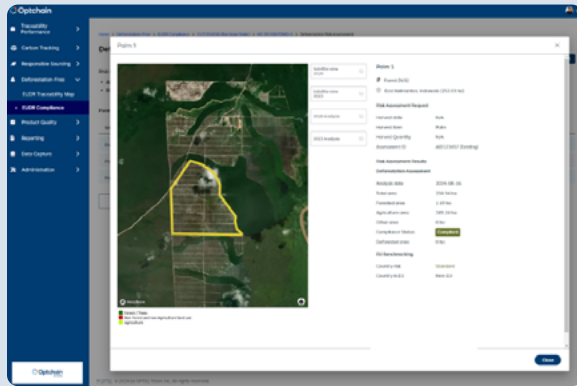


AI Integration

Our platform creates a digital replica of your supply chain, enabling real-time scenario modeling and decision assessment. AI-powered simulations improve strategic planning, risk management, and sustainability by tracking energy use and emissions.

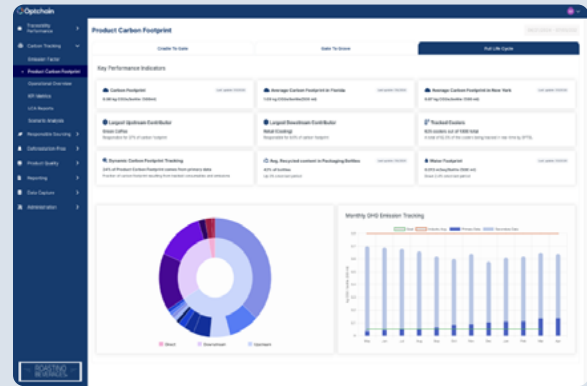
OPTCHAIN SOLUTION MODULES

EUDR Compliance



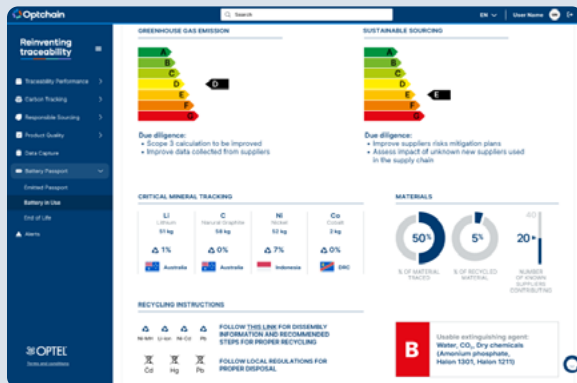
Connected directly to the EU Due Diligence Registry API, Optchain is fully equipped to generate and manage Due Diligence Statements for your company.

Carbon Tracking



Measure, track and report Scope 1, 2, and 3 greenhouse gas (GHG) emissions across both organizational and product levels with Optchain.

Digital Product Passport



Optchain is the all-in-one solution that will enable your company to handle data tracking and tracing across all stages of your products' lifecycle.

Compliance with:

- EUDR
- CBAM
- CSRD
- CSDDD
- Digital Product Passport and more.

WATCH OUR DEMO



CONTACT US

For more information, visit: optelgroup.com.



NORTH AMERICA
Canada – HEADQUARTERS
+1 418 688 0334

EUROPE
Ireland, Germany

ASIA
India
+91 832 669 9600

SOUTH AMERICA
Brazil
+55 19 3113 2570

optelgroup.com
© Optel Vision inc. d.b.a. "OPTEL Group", 2022–2025.
All rights reserved.

