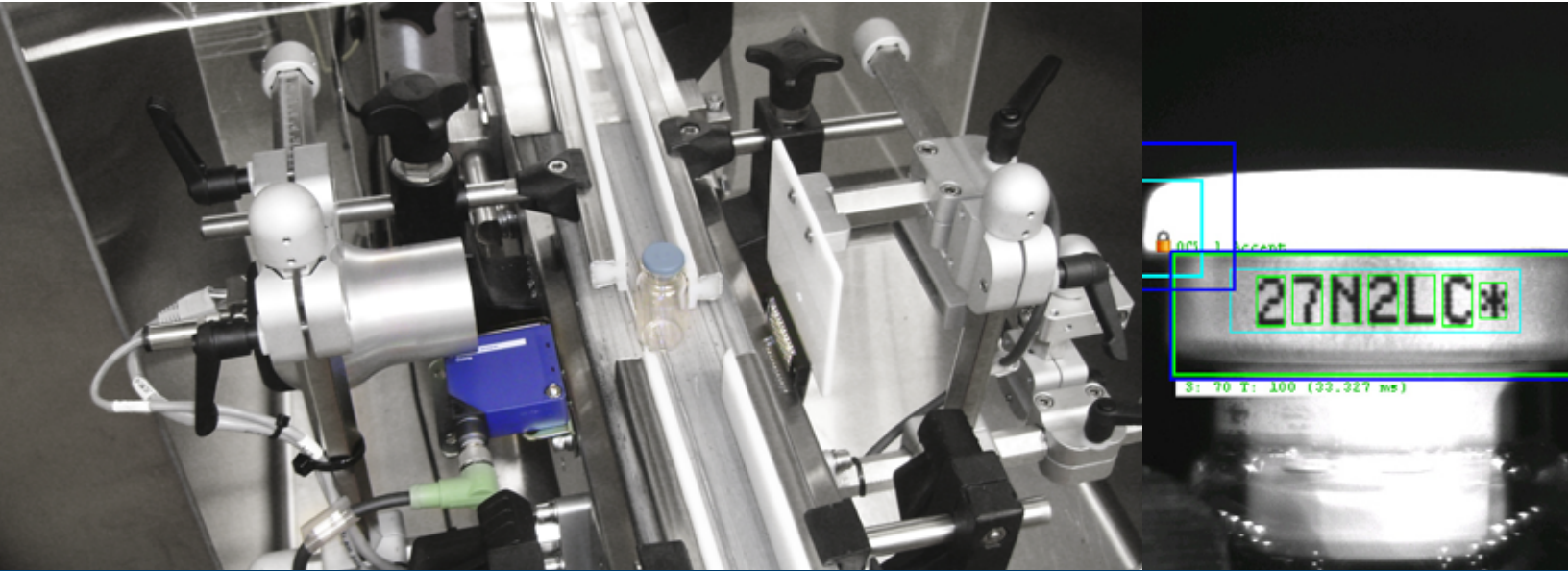


VIALSAFE™

PRECISE INSPECTION OF CAPS, CRIMPS,
RUBBER STOPPERS, LABELS AND FILL LEVELS ON VIALS



PHARMA



OTHER

OPTEL's **VialSafe™** was specifically designed with advanced software and optical technology to provide pharmaceutical manufacturers with superior automated vision inspection. **VialSafe™** has multiple on-line inspection capabilities for caps, crimps, rubber stoppers, labels and fill levels. The **VialSafe** application can verify the presence and color correctness of multicolor bands.

The simultaneous 360° OCV crimp inspection ensures that the correct information is printed on the crimp every time. The crimp inspection tool verifies presence, placement and integrity. The revolutionary code verification offers preset advanced vision tools, including image unwrapping, precision stitching, OCV, and Data Matrix reading.

OPTEL's **VialSafe™** can be used on any manufactured liquid filling machines or can be installed with minimal downtime on an existing line. OPTEL offers complete integration, training and validation. The system follows GMP guidelines and complies with FDA 21 CFR Part 11.

KEY FEATURES

- Data management tools – connectivity with ERP/SCADA system, batch record and device control
- Up to 2,000 products per minute
- 100% on-line inspection

BENEFITS

- High-accuracy (low false-reject rate)
- Toolless changeovers
- Enhances production efficiency, reduces downtime
- Turnkey solution

PERFORMANCE

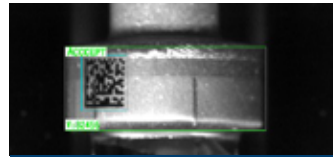
Up to 2,000 ppm

100% on-line inspection

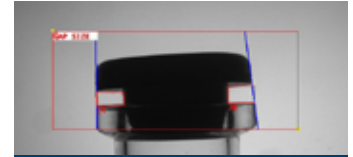
Quick and easy steps with an unlimited amount of recipe storage

I/O control – stand-alone units (PLC integration not required)

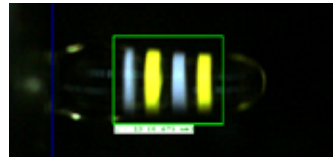
No contact with product



DATA MATRIX INSPECTION



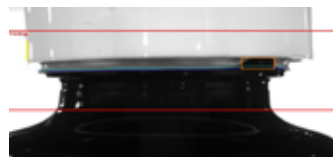
RUBBER STOPPER INSPECTION



MULTI-COLOR BANDS INSPECTION



UNWRAP IMAGE OF PRINTED CODE

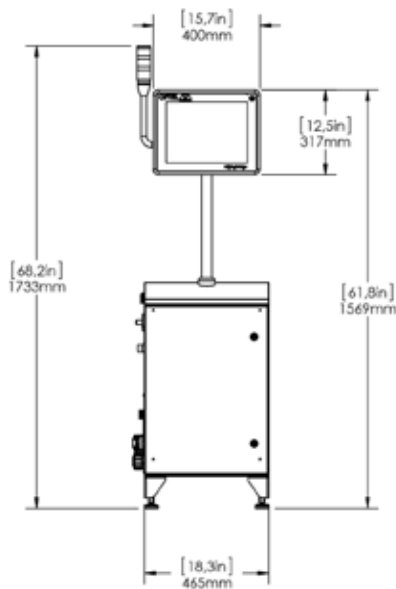


CRIMP ERROR

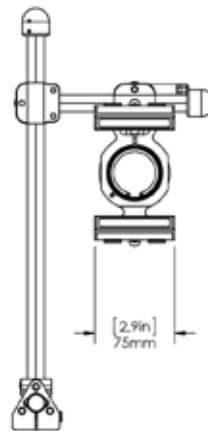


CAP COLOR

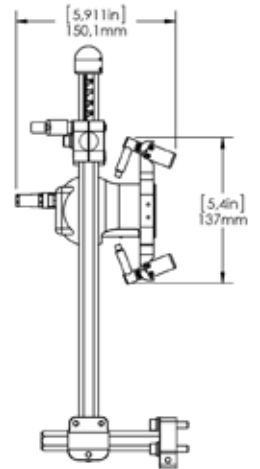
FRONT VIEW



FRONT VIEW



SIDE VIEW



The figures above illustrate an example of a typical installation. OPTEL has a wide range of solutions to fit the particularities of your specific packaging lines. Contact us for details.

Other modules and options are also available. Contact your Regional Sales Representative for more information. Find the location closest to you at: optelgroup.com

NORTH AMERICA

OPTEL Canada — HEADQUARTERS
+1 418 688 0334

EUROPE

OPTEL Ireland
+353 61480965

ASIA

OPTEL India
+91 832 669 9600

SOUTH AMERICA

OPTEL Brazil
+55 19 3113 2570

optelgroup.com
© 2021 by OPTEL GROUP.
All rights reserved.

