

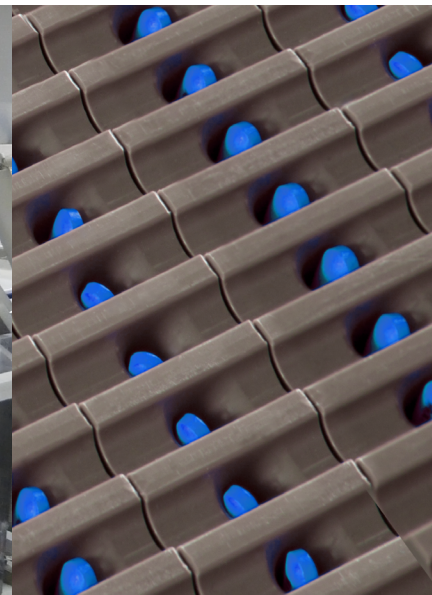
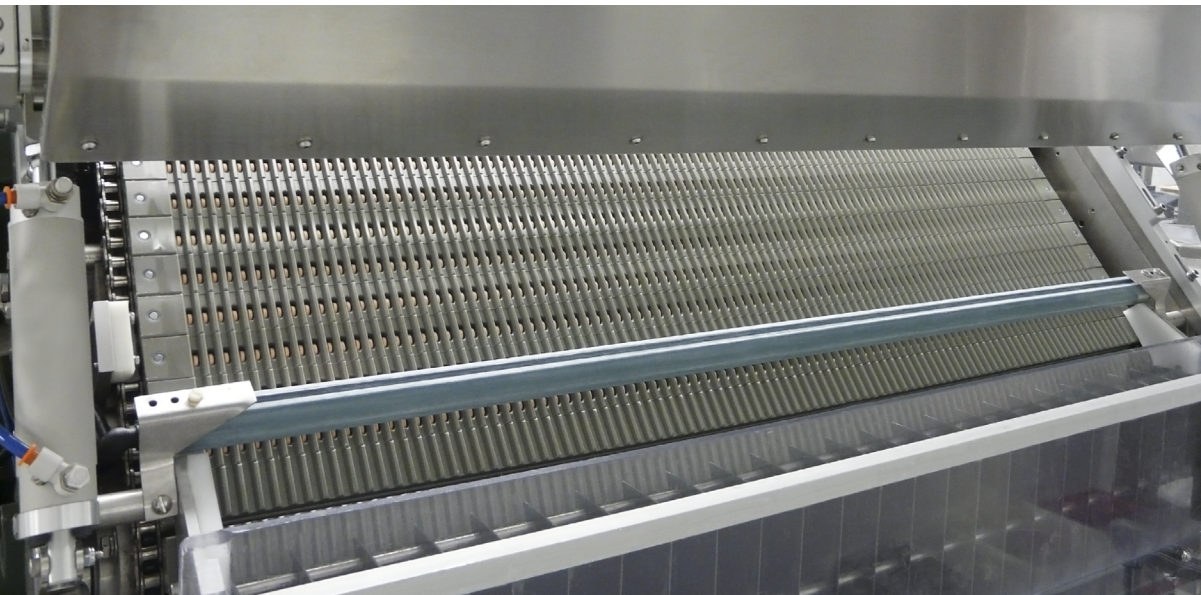
COUNTSAFE™ - Slat Counters

AUTOMATED INSPECTION SYSTEM DELIVERING SUPERIOR ACCURACY AND EFFICIENCY FOR SLAT COUNTERS



OPTEL

Technologies for a better world



The **OPTEL GROUP CountSafe™ - Slat Counters** is the most innovative automated vision inspection solution on the market. The high-performance inspection system provides slat counter machines with increased accuracy which helps to avoid costly recalls. **OPTEL's CountSafe - Slat Counters** can inspect: tablets, capsules, gel caps, dual colored capsules and dual colored tablets.

This cost-effective, ergonomically designed **CountSafe - Slat Counters** detects wrong color, rogue, missing, broken, chipped or over/undersized tablets, foreign object/material and overall product integrity.

OPTEL CountSafe - Slat Counters uses the latest generation of optical technology and vision algorithms. It can be used on any manufactured slat counter or can be installed with minimal downtime on an existing line. **OPTEL** offers complete integration, training and validation. The system follows GMP guidelines and is ready for FDA 21 CFR Part 11.

INDUSTRIES



PHARMA



OTHER



BENEFITS

- Excellent ROI
- Avoids wrong product introduction
- 100% of products inspected
- 100% accurate count
- Turnkey solution

KEY FEATURES

- 100% inspection for:
 - Wrong color
 - Wrong size
 - Wrong shape
 - Wrong count
 - Broken
- Exact count with precision
- Uncoated tablets
- Foreign objects
- Missing tablets or capsules
- Supplemental tablets or capsules
- Compatible with carry-around tablets or capsules
- Partial or blank slat compatible
- Air knife for dust protection
- Dual ejection table capability

PERFORMANCE VISION

- Inspects 600 slats/min

- Color differentiation algorithm in CIELAB

- Works on any color of slat

- Configurable alarm when foreign objects are detected (no line stoppage required)

- Quick and easy set up with an unlimited amount of recipe storage

- Fully integrated product tracking

- High accuracy (low false reject rate)

- Inputs/ouputs control – Stand alone units (PLC integration not required)

- Tool-less changeovers for a quick and simple software set up

- Compact design



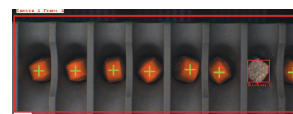
Correct Products



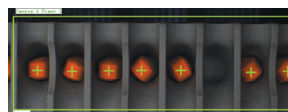
Rogue Pill



Foreign Material Error



Broken Product



Missing Product

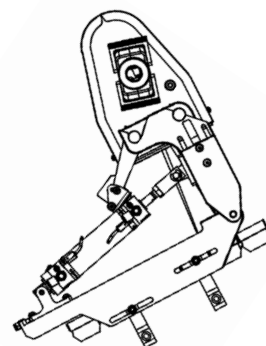
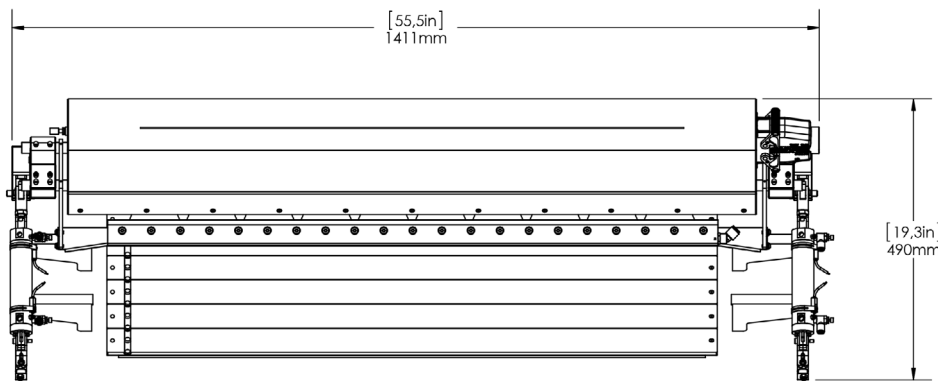


Oversized Product

ALSO AVAILABLE

- Multiple ejection stations

- Q, OQ protocols



The figures above illustrate an example of a typical installation. OPTEL has a wide range of solutions to fit the particularities of your specific packaging lines. Contact us for details. Other modules and options are also available; contact your Regional Sales Representative for more information. Find the location closest to you at: optelgroup.com



OPTEL is proud to be a **Certified B Corporation**, a group of companies that redefines success in business and strives to not only be the best in the world, but also the best for the world.