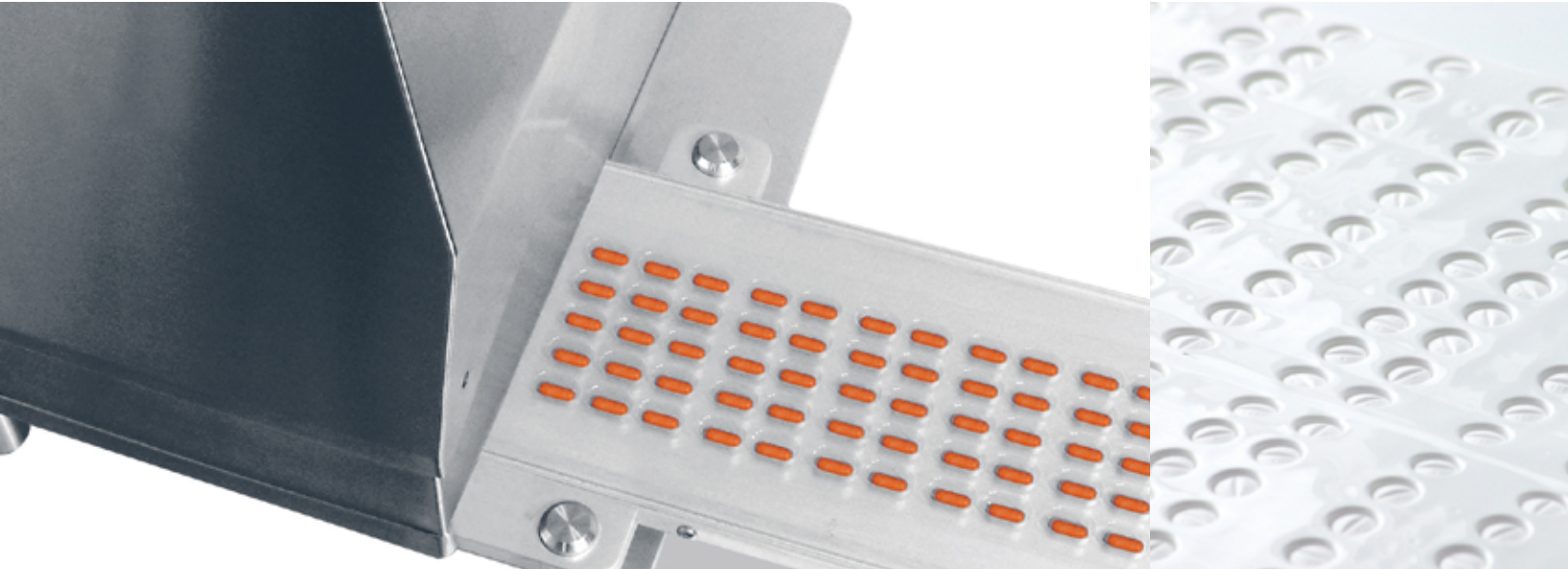


BLISTERSAFE™

VERIFICATION OF TABLETS AND CAPSULES ON ANY FORMING MATERIAL
USED ON BLISTER PACKAGING LINES



PHARMA



OTHER

OPTEL's **BlisterSafe™** provides precise verification of tablets and capsules on any forming material used on blister packaging lines and increases your overall line efficiency through a reduction of downtimes, false rejects and rework. **BlisterSafe™** also increases line accuracy and quality assurance to help avoid costly recalls.

OPTEL's **BlisterSafe™** detects colored tablets and capsules even in similarly colored blisters. It is able to inspect multiple configurations, including white tablets on a white background. Our **BlisterSafe™** also has advanced software technology capable of handling all cutting matrices and blister tracking.

KEY FEATURES

- Unique illumination technology
- 1,000 blister packs per minute
- Precise color and shape verification
- Broken and missing tablet detection
- Misplaced or extra tablet detection
- Two-sided inspection with dual-color tablet correlation

BENEFITS

- Helps avoid downtime and rework
- Optimizes production and minimizes false rejects
- Toolless changeovers
- Compact design
- Quick, simple software setup

BLISTERSAFE™

PERFORMANCE

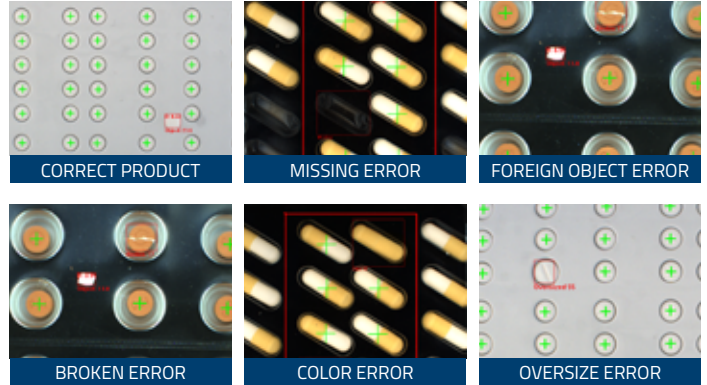
- Up to 1,000 blister packs per minute
- 100% on-line inspection
- Inspection expandability
- Quick and easy recipe storage
- High accuracy (low false-reject rate)
- No contact with product
- Configurable alarm
- Fully integrated product tracking

UTILITIES

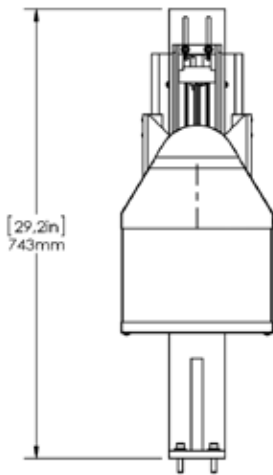
- Power Requirements** 120-240 VAC 50/60 Hz
- Compressed Air** 60 bars (90 psi)

ALSO AVAILABLE

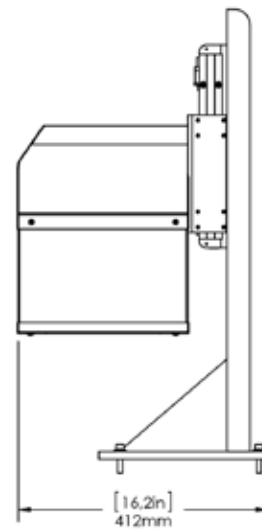
- BlisterSafe for lidding
- Overheated-foil detection
- Splice detection
- Pneumatic lift
- Custom design



FRONT VIEW



SIDE VIEW



The figures above illustrate an example of a typical installation. OPTEL has a wide range of solutions to fit the particularities of your specific packaging lines. Contact us for details.

Other modules and options are also available; contact your Regional Sales Representative for more information. Find the location closest to you at: optelgroup.com

NORTH AMERICA

OPTEL Canada — HEADQUARTERS
+1 418 688 0334

EUROPE

OPTEL Ireland
+353 61480965

ASIA

OPTEL India
+91 832 669 9600

SOUTH AMERICA

OPTEL Brazil
+55 19 3113 2570

optelgroup.com
© 2021 by OPTEL GROUP.
All rights reserved.

