

OPTEL's Inventory GeoTracking Solution



GAIN COMPLETE VISIBILITY ON THE GEOLOCATION, LEVELS AND EXPIRATION DATES OF YOUR ASSETS.

**TRACK
AND
TRACE
YOUR INVENTORY
IN REAL TIME**



OPTEL's Inventory GeoTracking solution provides real-time visibility on your inventory flow in your supply chain, allowing you to improve forecasting and be more agile with your inventory.

It's a traceability module that can connect to your existing inventory management system or be implemented as a stand-alone solution. We offer multiple standard options or a customized solution to fit your needs and objectives.



VALUE PROPOSITION

OPTEL's Inventory GeoTracking solution provides visibility on where your products are in real time and when your assets will arrive at a specific node in the supply chain. It allows you to receive notifications of anomalies or delays to minimize impact on on-time deliveries and costs.

This traceability solution can stand alone or provide an additional layer of inventory management, enabling real-time visibility on inventory geolocation, level, expiry date and accuracy.

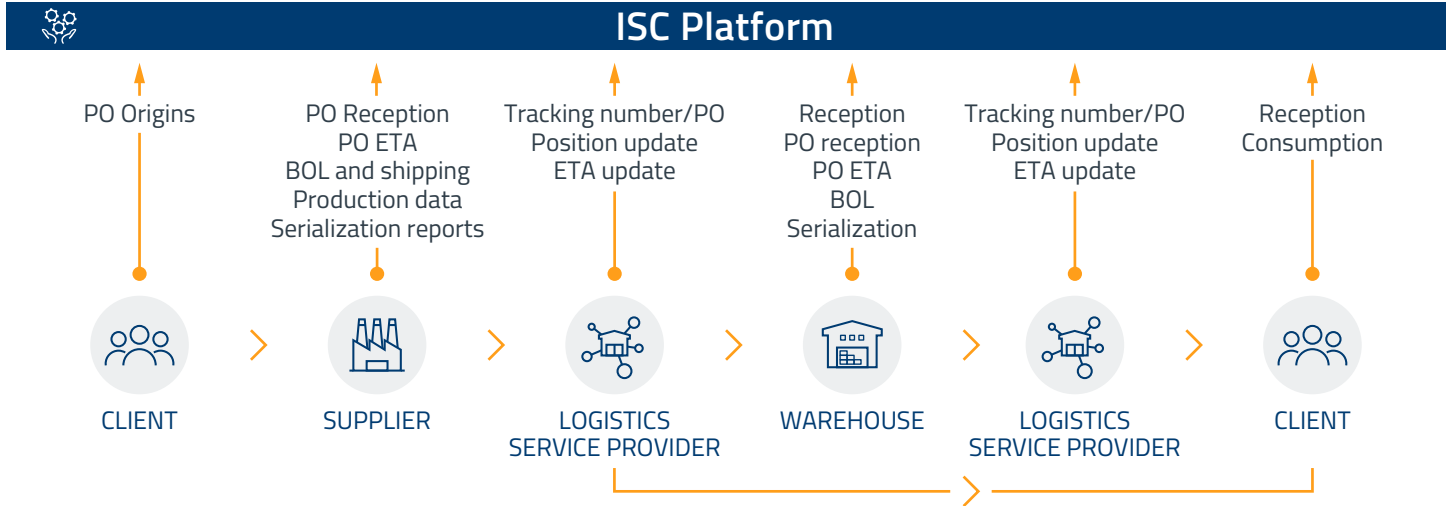
We digitized, captured and empowered traceability data from inventory levels, logistics and movement throughout the supply chain. Each product's history within the inventory is digitized and combined with the aggregation of the parent-child relationship data to improve forecasting and management of expiring products, increase inventory accuracy and decrease costs.

HOW CAN THIS SOLUTION HELP YOUR BUSINESS?

- Gain visibility on product flow/ inventory
- Increase inventory turnover, agility and accuracy
- Improve product return management
- Enable advanced demand planning
- Improve FIFO x FEFO management
- Enable accurate inventory forecasting
- Reduce risk of shortages or spare volume
- Minimize excess and obsolete inventory
- Prevent transportation delays
- Replace manual data entry processes
- Increase on-time delivery (OTD)
- Obtain a consolidated view from numerous data sources in one user interface

OPTEL'S INVENTORY GEOTRACKING SOLUTION - SOLUTION OVERVIEW AND OPTIONS

HOW IT WORKS



A PO contains the origin, destination, product number (SKU, GTIN), QTY and LOT
 The bill of lading (BOL) contains the origin, destination, product number (SKU, GTIN), QTY, LOT, freight data and carrier

SOLUTION OPTIONS – Options can be combined or stand alone

1	Inventory visibility	Gain real-time inventory visibility at every step of your supply chain <ul style="list-style-type: none"> Digitize your paperwork Reduce Excel usage
2	Optimized inventory management	Improve and optimize your inventory management practices with data empowerment for: <ul style="list-style-type: none"> Real-time visibility on product flow, inventory levels and geolocation Stock rotation methods (FIRST IN/FIRST OUT, FIRST EXPIRED/FIRST OUT) Accurate inventory material costing Configurable to your inventory KPIs, enabling the creation of alarms (accuracy, safety stock, reorder point, turnover ratios, excess and obsolete, etc.)
3	Inventory control	Supply chain anomaly detection: <ul style="list-style-type: none"> Supply chain diversion Precise call to action (aligned action priority)

ADVANCED OPTIONS

The Inventory GeoTracking solution can be easily scaled to other modules to add value for your business.

Disruptive Artificial Intelligence

Add inventory management and demand planning extension powered by artificial intelligence to the Inventory GeoTracking solution for optimal efficiency.

- AI-based platform for demand planning and supply chain optimization
- Anticipate and detect rare events through novel machine-learning algorithms
- Manage supply and demand by optimizing inventory levels with improved measurements such as increased OTD, decreased costs, improved gross margin and EBITDA

Carbon Footprint Assessment

OPTEL can track and trace supply chain emissions of your inventory to help your business reach its sustainability goals. This option involves adding type and context to the data capture process implemented for the Inventory GeoTracking solution.

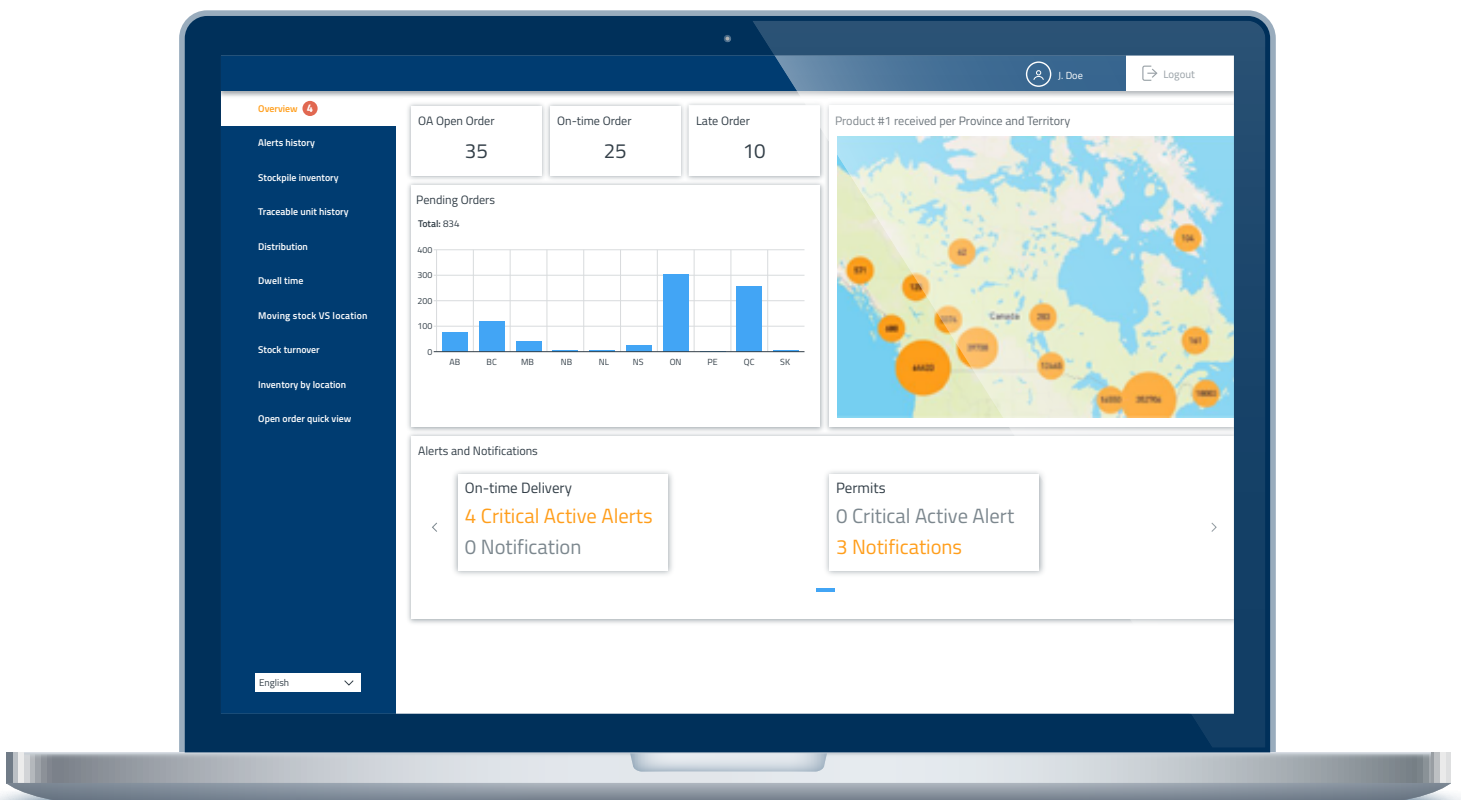
OPTEL'S INVENTORY GEOTRACKING SOLUTION

KEY FEATURES

- Minimum disruption of your operations
- Modular and scalable approach
- We connect with your ERP/DRP/MES
- Connect with multiple data sources with query capabilities
- Intuitive and user-friendly with a configurable interface
- Alert watchdog systems with customized dashboards
- AI predictive inventory forecasting
- Real-time data processing to constantly enable proactivity versus reactivity
- Ability to capture data through 2D, 1D, RFID, IoT
- Carbon footprint assessment by product (optional)
- Track physical assets and transactions
- Meet regulatory requirements and GS1 standards
- Secure platform with controlled user access
- Data integrity: incoming source from trusted contributors
- Professional services to support and optimize solution

BENEFITS

- Increased inventory turnover and inventory accuracy
- Gain real-time visibility throughout all supply nodes
- Improve FIFO x FEFO management
- Enable accurate inventory forecasting
- Reduce risk of shortages or spare volume
- Minimize excess and obsolete inventory
- Prevent transportation delays
- Replace manual data entry processes
- Increase on-time delivery (OTD)
- Consolidated view of data in one user interface



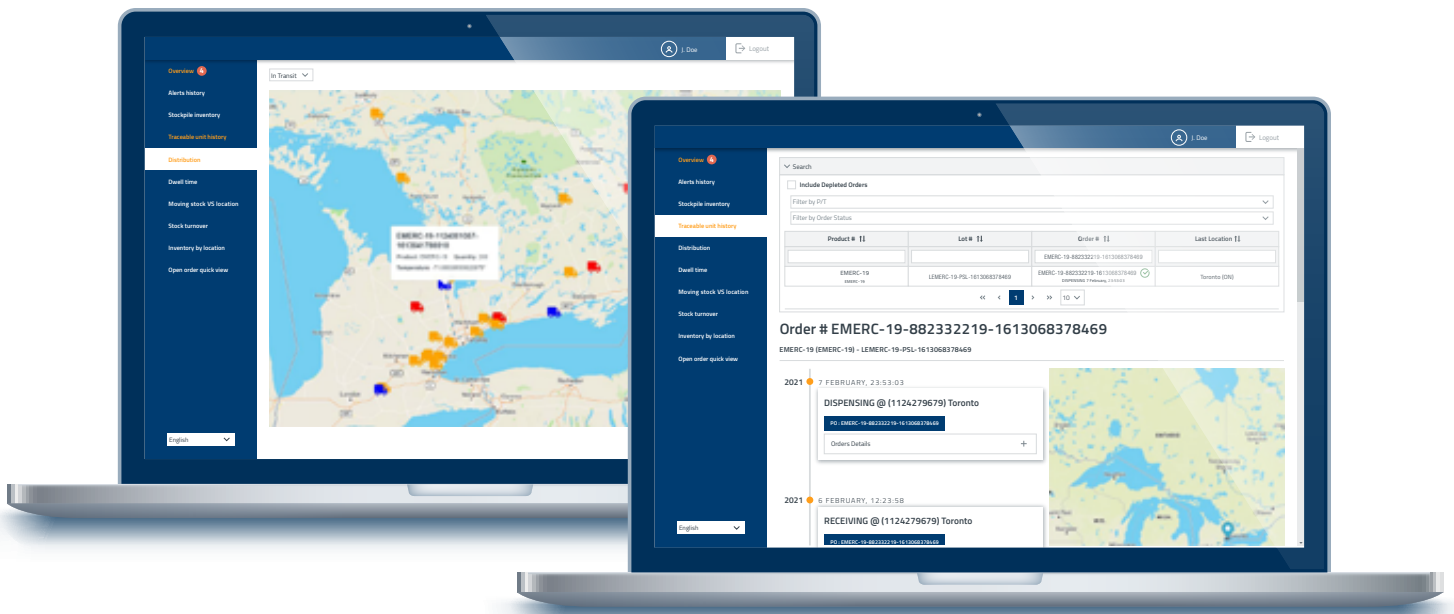
OPTEL'S INVENTORY GEOTRACKING SOLUTION

WHAT TECHNOLOGY IS REQUIRED?

Our technology stack includes hardware to capture accurate and reliable data in real time and software to empower the data (geolocation, supply chain mapping, visualization, monitoring and alerts).

OPTEL'S INTELLIGENT SUPPLY CHAIN PLATFORM

The **Inventory GeoTracking** solution is a module of OPTEL's Intelligent Supply Chain (ISC), a powerful end-to-end traceability platform. The ISC can digitize supply chain operations from raw materials to end user, enabling real-time visibility throughout the product life cycle by capturing and empowering data at every step of the value chain. Multiple modules make up the ISC platform, helping businesses solve issues related to supply chain and operational efficiency, product safety, integrity and authentication, sustainability, brand protection, regulatory compliance and user engagement.



ABOUT OPTEL

OPTEL is a global company with manufacturing sites on four continents and 600 employees around the globe. The company has 30 years of proven expertise in developing and deploying track-and-trace, vision and traceability systems for the world's leading pharmaceutical, food and beverage, and agrochemical brands. OPTEL is a Certified B Corporation and co-founder of the Canadian AI supercluster for supply chains (Scale AI).



CONTACT US

For more information, visit: optelgroup.com.

NORTH AMERICA

OPTEL Canada — HEADQUARTERS
+1 418 688 0334

EUROPE

OPTEL Ireland
+353 6 14 80 965

EUROPE

OPTEL Germany

ASIA

OPTEL India
+91 832 669 9600

SOUTH AMERICA

OPTEL Brazil
+55 19 3113 2570

optelgroup.com
© 2022 by OPTEL GROUP.
All rights reserved.

